



DMS CONDOR TUGBOAT

DIMENSIONS

Length:	25.9m
Beam:	9m
Depth:	3.2m
Draft:	2.4m
Gross Tonnage	112.72t

PERFORMANCE (Trials)

Bollard Pull:	24.0t
Speed (max):	11.3 knots

TANK CAPACITIES

Fuel Oil:	59.7m ³
Fresh Water:	36.4m ³
Sewage:	2.1m ³
Bilge Water:	3.5m ³
Hydraulic Oil:	1.1m ³

CLASSIFICATION

Bureau Veritas I HULL • MACH Tug
MCA Cat 1 - Up to 150 NM from safe haven
4 Crew accom. incl. general facilities
6 No. Persons Max

EQUIPMENT

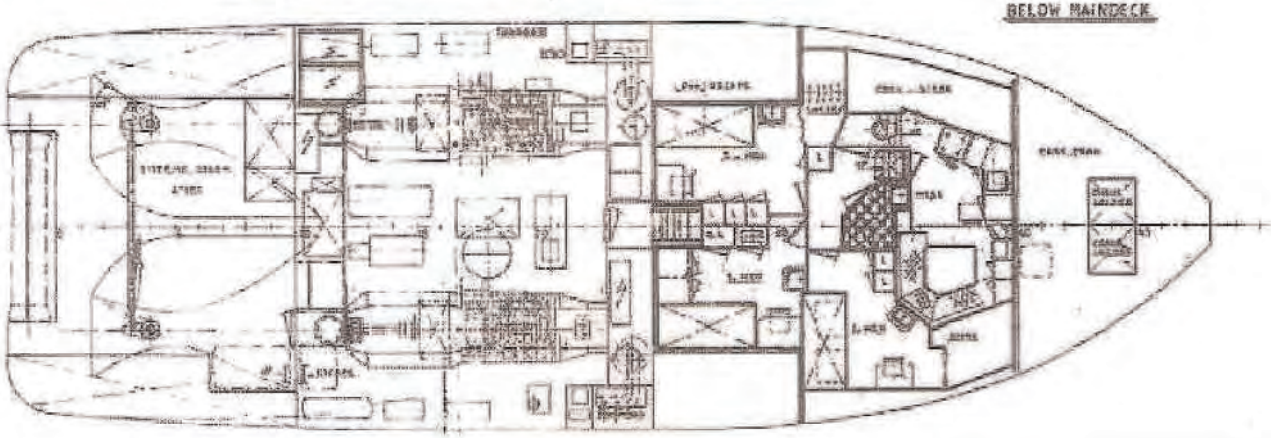
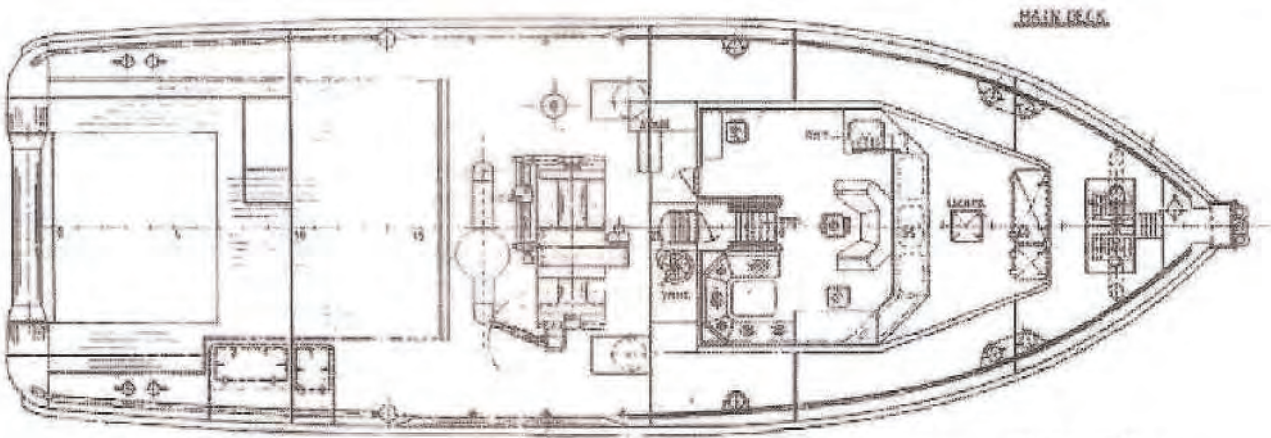
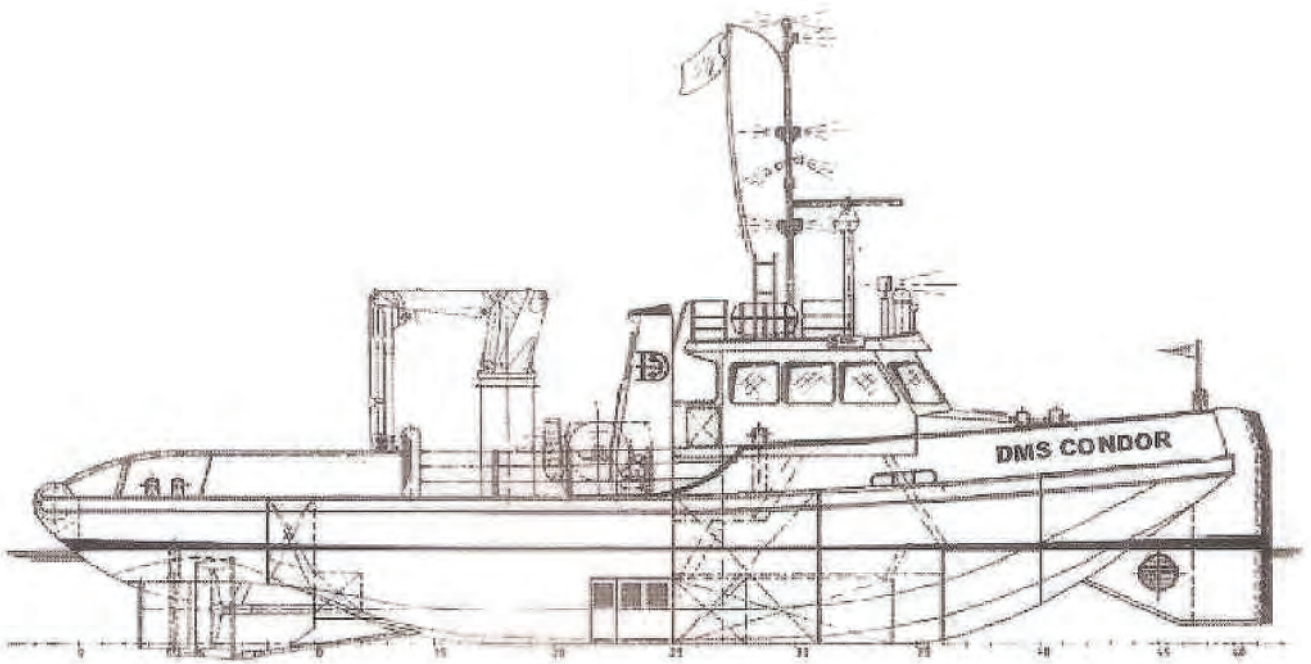
2 x CAT Type 35088 T NB engines - 1947hp (1452kW)
1 x 100 hp Bow Thruster
1 x John Deere 4045 TF Generator - 89kVA 220/380V 50Hz
1 x Hatz 4L41C Generator - 30kVA 220/380V 50Hz
1 x Ridderinkhof 40T at 3m/min 36mm Ø - 600m
1 x Towing Winch 40T 36mm Ø - 250m
1 x HEILA HLRM 80-3S Deck Crane
1 x Mampaey SWL 25t Towing Hook
1 x 3t Capstan



Jenkins Marine Ltd.
New Harbour Rd West
Hamworthy
Poole
BH15 4AJ
United Kingdom

+44 (0) 1202 668 558
office@jenkinsmarine.co.uk
www.jenkinsmarine.co.uk





Jenkins Marine Ltd.
New Harbour Rd West
Hamworthy
Poole
BH15 4AJ
United Kingdom

+44 (0) 1202 668 558
office@jenkinsmarine.co.uk
www.jenkinsmarine.co.uk

